

Sexual Health Training Resources

To support you in the delivery of sexual health services, there are a variety of online training programmes. These programmes will help develop your skills and knowledge to satisfy the service-specific competencies as outlined in the [Declaration of Competence](#) for Pharmacy Emergency Contraception Services.

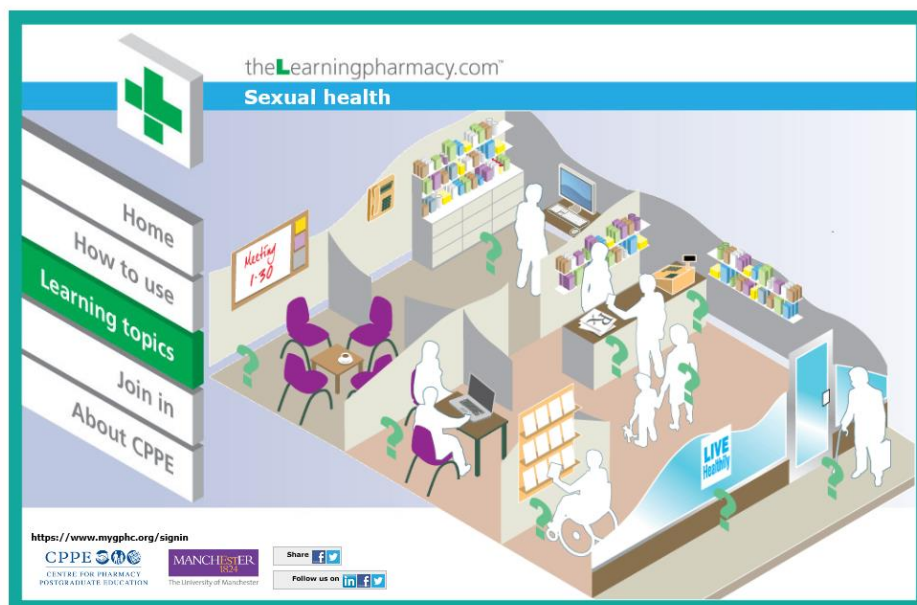
The following gateway pages on the Centre for Pharmacy Postgraduate Education (CPPE) website list all the relevant CPPE learning as well as signposting to other non CPPE resources/websites:

- **Sexual Health** - <https://www.cppe.ac.uk/gateway/sexual>
- **Contraception**- <https://www.cppe.ac.uk/gateway/contra>
- **Emergency contraception** - <https://www.cppe.ac.uk/gateway/ehc>

The CPPE also offer a 'Shared Decision Making' online course, which is an advanced consultation skills courses with more skills and techniques to help develop a shared decision making approach to any consultation - <https://www.cppe.ac.uk/programmes/l/sharedec-e-00/>.

The Learning Pharmacy

The [Learning Pharmacy](#) also provides a free interactive learning for community pharmacy, which includes a section on Sexual Health. ** This resource still provides some good techniques and information; however, it has not been updated. Please ensure you refer to the most up to date resources and guidance that you will find in your PGD's and service specification relating to the delivery of your sexual health service.*



Declaration of Competence (DoC)

As specified in your Service Level Agreement to deliver sexual health services, you must complete the Declaration of Competence for [Emergency Hormonal Contraception](#). Pharmacists must revisit and work through the DoC every two years to reassess their competence.

On this page - <https://www.cppe.ac.uk/services/declaration-of-competence#navTop> you can opt to receive email reminders every 6 months with expiry dates of your DoCs



send me email reminders every 6 months with the expiry dates of my DoCs

E-learning – Remote consultation skills

This CPPE e-learning programme is for all pharmacy professionals undertaking remote consultations, supporting them to apply their existing consultation skills when undertaking consultations via video and over the phone. There are several examples of remote consultations, complete with debriefs, so that learners can see how the theory works in practice.



CPPE Remote
consultation skills e

NHSE have also produced a practical guide to assist community pharmacy teams planning to conduct remote consultations with patients. [Remote and video consultations guidance for community pharmacy teams \(NHSE 2022\)](#)

Health Education England e-Learning for Healthcare (HEE e-LfH)

HEE e-LfH has worked with the Faculty of Sexual and Reproductive Health (FRSH) to develop 30 new resources covering a host of topics including, contraception choices, sexually transmitted infections and early pregnancy.

The newly updated programme is aimed at a range of healthcare professionals, including nurses and midwives, to gain the necessary knowledge to successfully support patients with their sexual reproductive needs.

Each course is free, interactive and readily accessible anywhere at any time. Learners can access information, read articles, undertake self-assessments, view video clips and animation, along with real-life case studies to support their learning.

The courses range from 20-30 minutes in duration.

Click [here](#) for more information and to register.

Safeguarding

HEE e-LfH provide courses on safeguarding [adults](#) and [children and young people](#).

[HEE e-LfH](#) - This course addresses procedures and referral pathways in relation to both children and young people and adult safeguarding. More specifically it addresses key areas within these including domestic violence, female genital mutilation (FGM), sexual assault and the management of STI, emergency contraception, post exposure prophylaxis (PEP) and child sexual exploitation.

Further information on training, reporting incidents and Hertfordshire policies and procedures can be accessed here:

[Adult Safeguarding Board](#)

[Hertfordshire Safeguarding Children Partnership](#)

[Hertfordshire Safeguarding Training](#)

Additional information for patients

As part of your consultation, patients may require some further information about general contraception, emergency contraception and sexual health.

[Sexwise](#) provides honest advice about contraception, pregnancy, STIs and pleasure.

To better understand the different types and methods of hormonal, non-hormonal and emergency contraception, their use, advantages, failure rates and complications visit [Contraception Choices](#)

For more specialist sexual health and contraception services visit [Sexual Health Hertfordshire](#)

FYI – Contraception pads are also available for pharmacies to use with patients, listing the various contraception choices available. If you would like copies, please contact publichealth@hertfordshire.gov.uk



Further information

If you have any questions or need support to deliver sexual health services please contact:

- **Dual Testing, Condom Scheme:** clcht.chlamydia screeningservice@nhs.net Tel: 0208 102 4894
- **Sexual Health Training:** herts@tht.org.uk Tel: 01920 484 784
- **Contracts and Commissioning:** eleonor.gage1@hertfordshire.gov.uk
- **Sexual Health Promotion:** Rob.bacon@hertfordshire.gov.uk